



孕龍科技股份有限公司
ZeroPlus Technology Co., Ltd.

SPECIFICATION

MODEL: B09015-LAP-DALI Interface-M

PART NO: _____

VERSION: V1.00

Approver		Check	Design
GM	PM		

Customer Confirm

* Please fax the file to
ZeroPlus Technology after
signing .

2F, NO.123, Jian Ba Rd,
Chung Ho City, Taipei Hsian, R.O.C.

Tel:+886-2-66202225
Fax:+886-2-22234362



Content

1. Software Download.....	3
2. Software Installation	6
3. Software Register	10
4. User Interface	13
5. Operating Instructions.....	16



1. Software Download

Please download the software as the following steps:

※ Remark: We won't have additional notice for you, when there is any modification of the module specification. If there is some unconformity caused by the module version upgrade, users should take the module software as the standard.

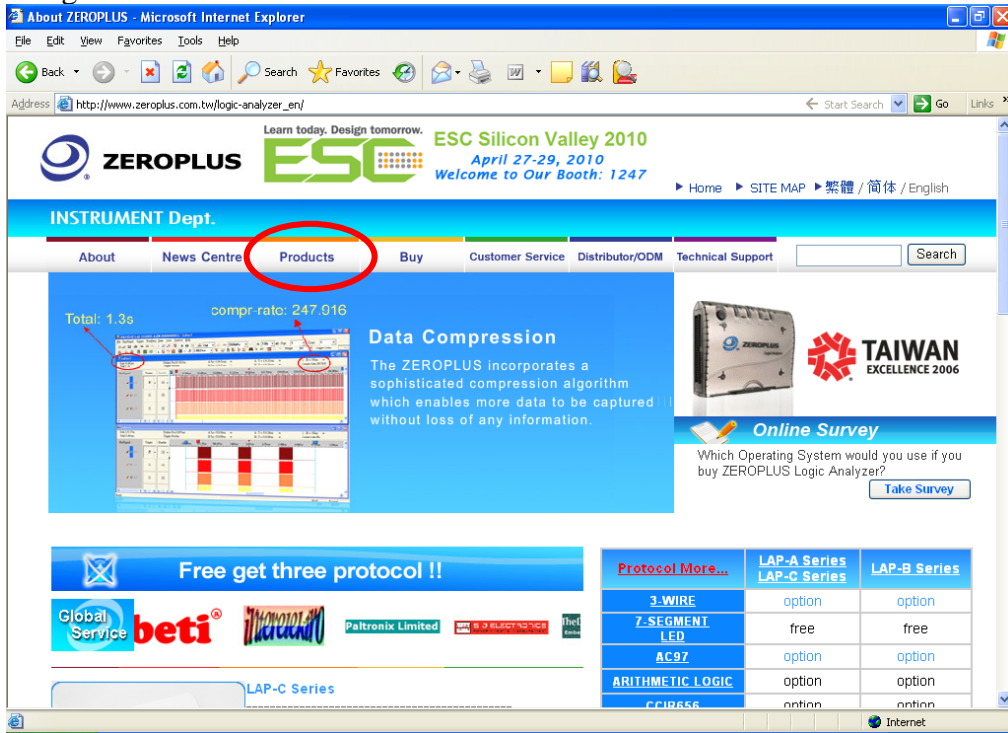
STEP 1. Visit the website of ZeroPlus: <http://www.zeroplus.com.tw>.

STEP 2. Click the **English** in the Instrument Division part on the Homepage.

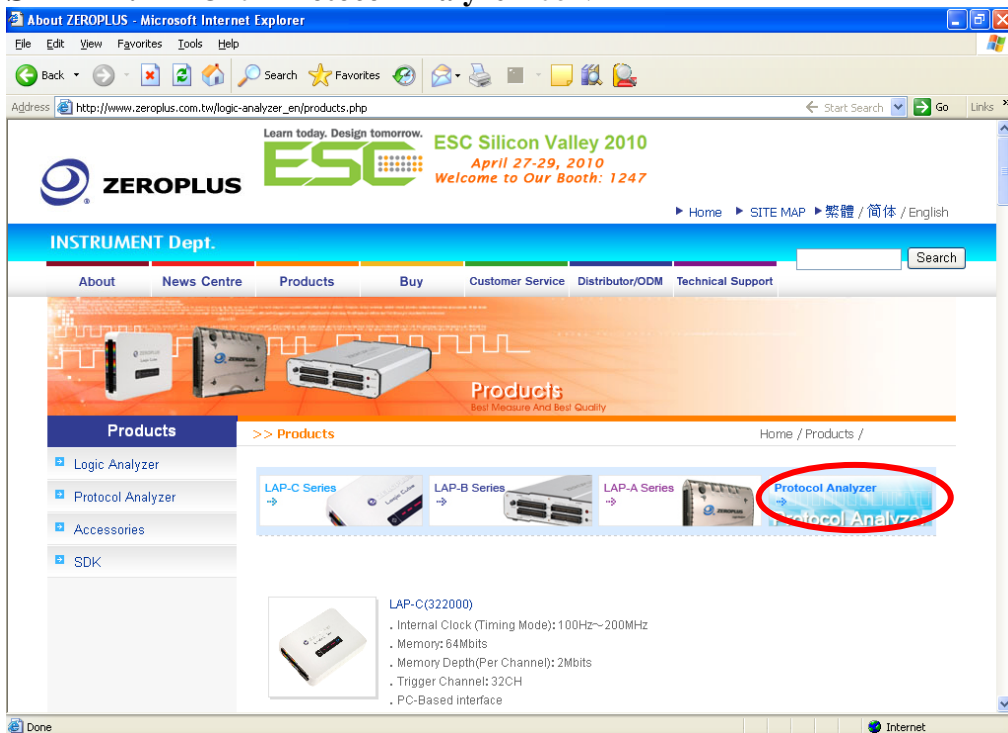




STEP 3. Click **Products** menu or select **Protocol Analyzer** item from its pull-down menu to go straight to STEP 5.

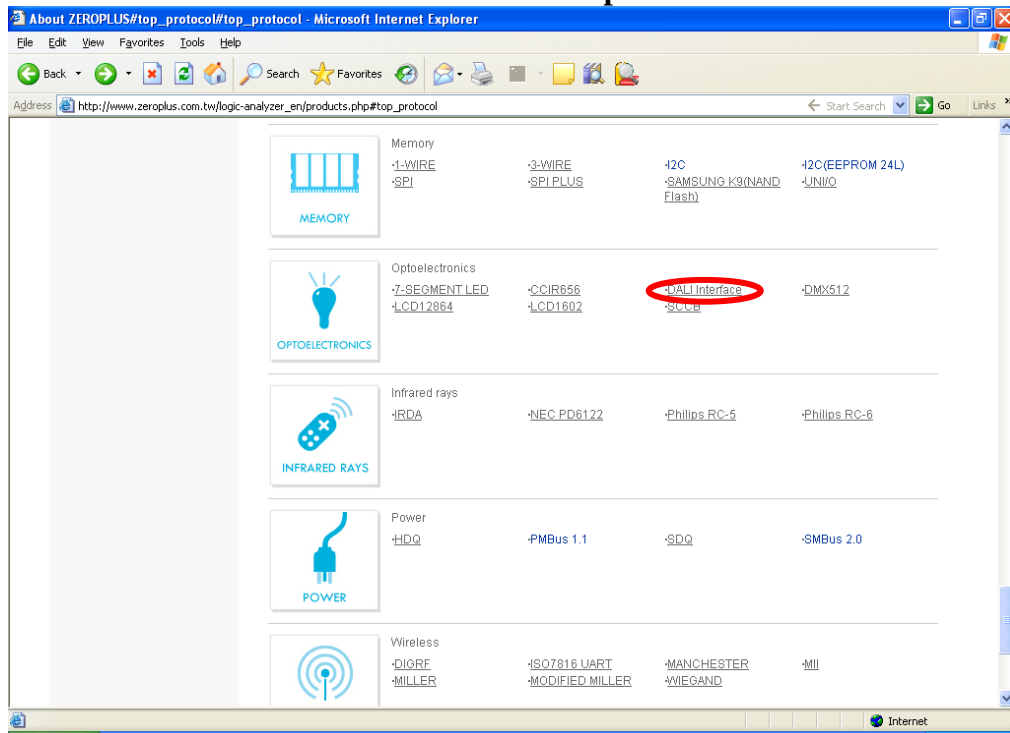


STEP 4. Click **Protocol Analyzer** icon.

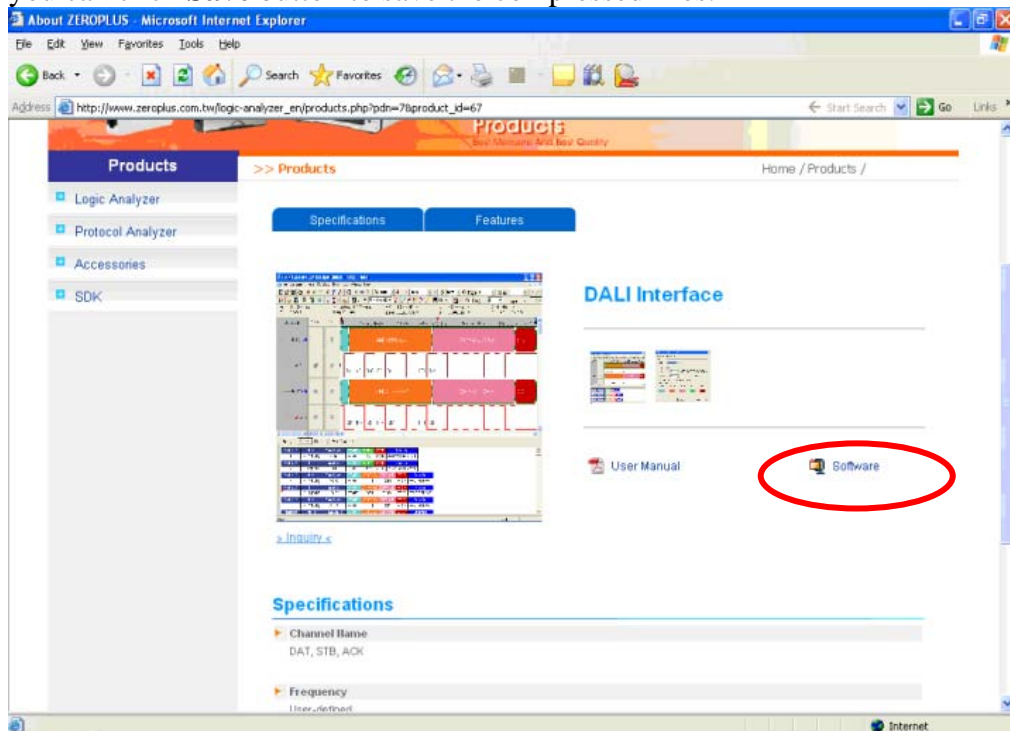




STEP 5. Click **DALI Interface** in the **Optoelectronics** column.



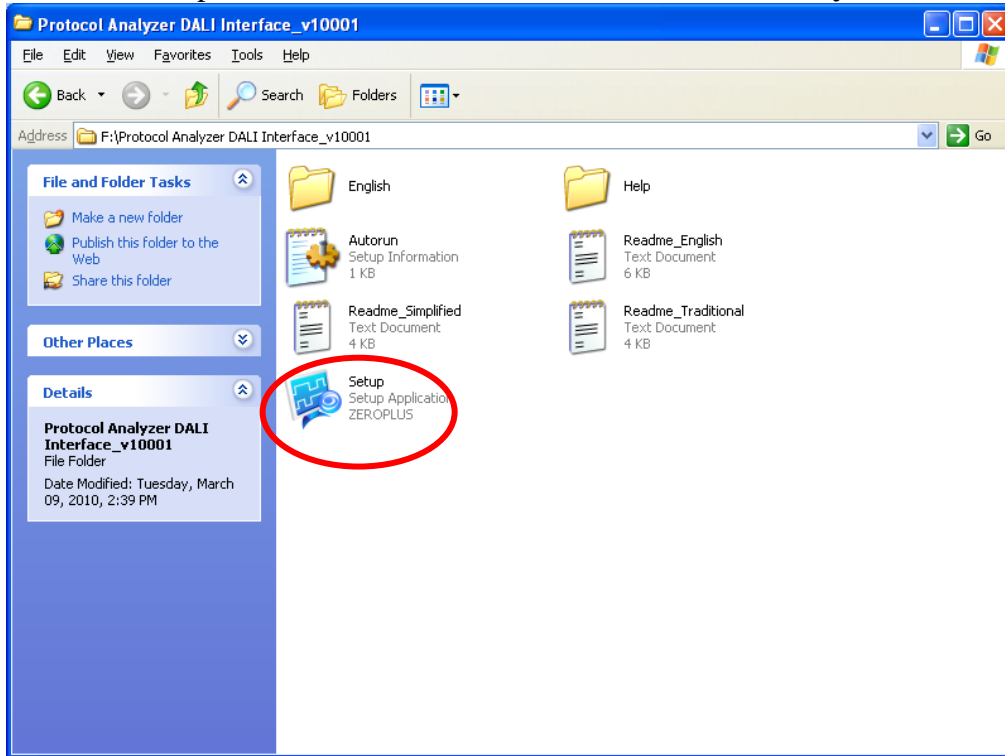
STEP 6. Click **Software** in the Products page. When the File Download dialog box appears, you can click **Save** button to save the compressed files.



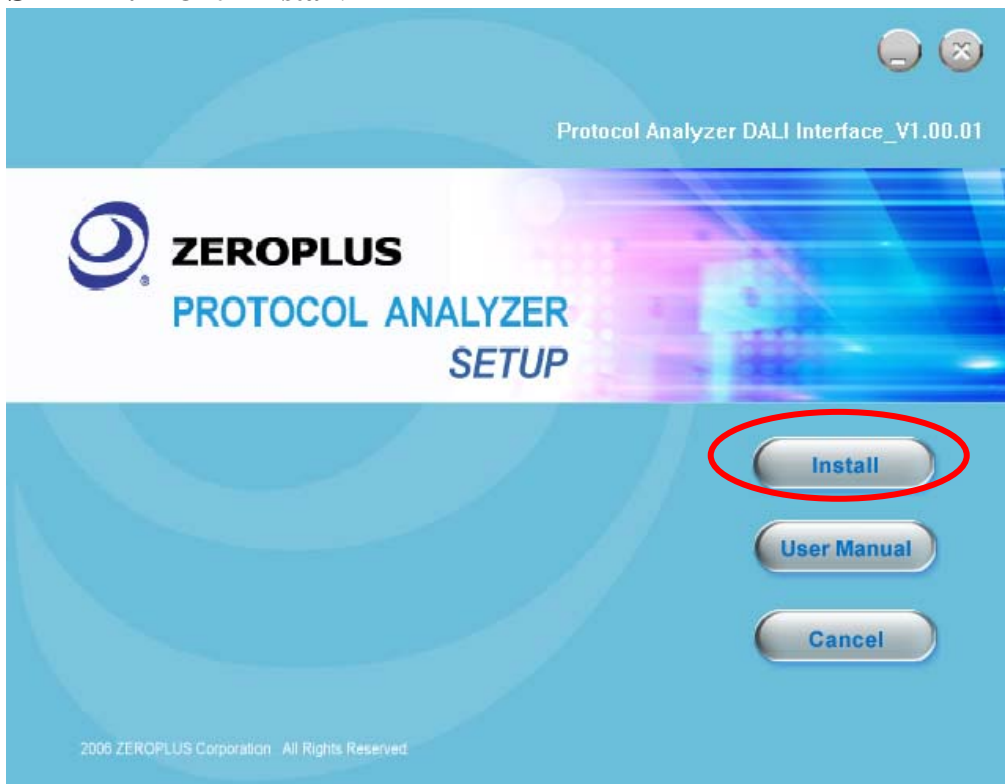


2. Software Installation

STEP 1. Open the downloaded files to install **Protocol Analyzer DALI Interface**.

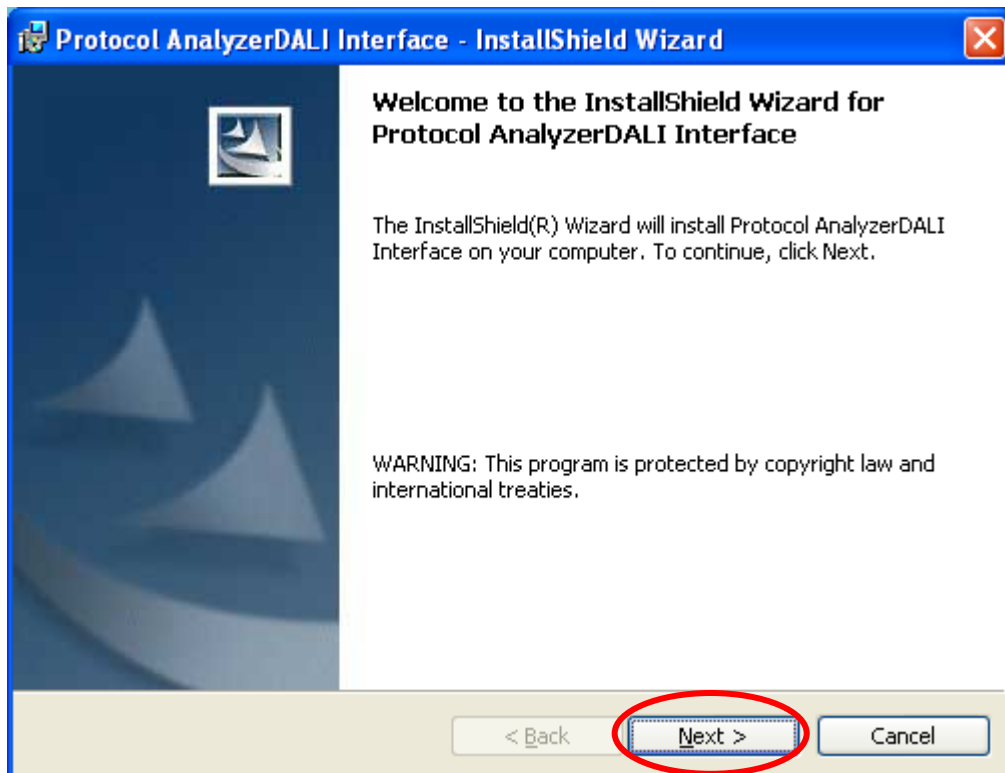


STEP 2. Click **Install**.

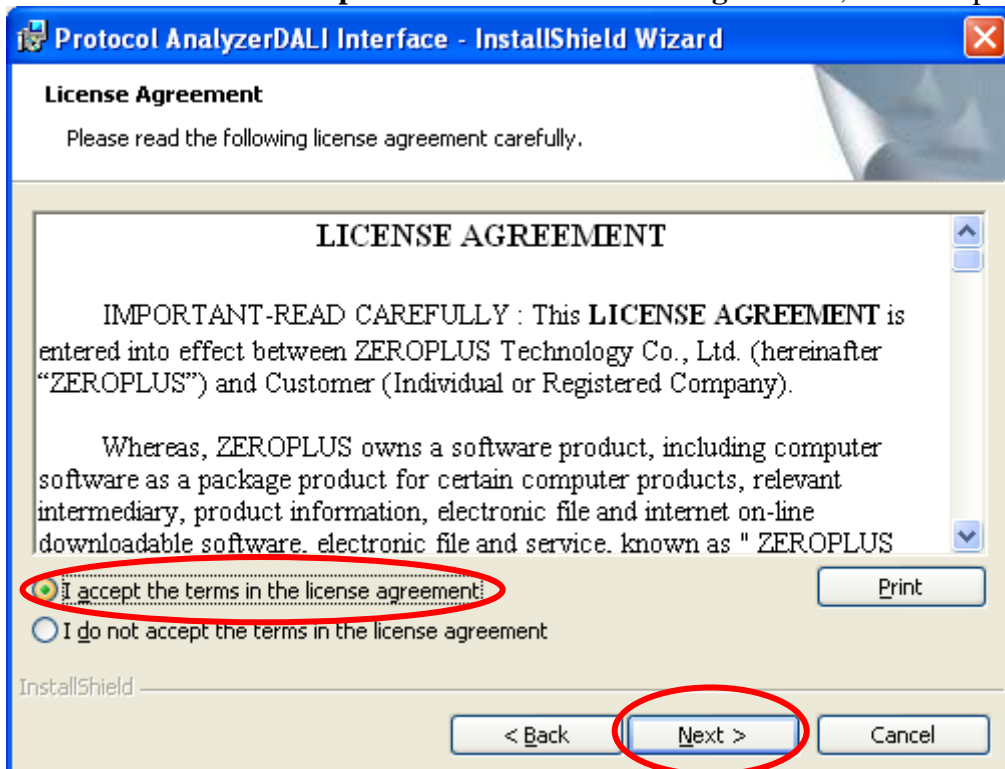




STEP 3. Click Next.



STEP 4. Select **I accept the terms in the license agreement**, and then press Next.





STEP 5. Fill in users' information in the below dialog box and click **Next**.

Protocol AnalyzerDALI Interface - InstallShield Wizard

Customer Information

Please enter your information.

User Name:
kelly

Organization:
ZeroPlus

Install this application for:

Anyone who uses this computer (all users)

Only for me (kelly)

InstallShield

< Back Next > Cancel

STEP 6. First, select **Complete** and then click **Next**.

Protocol AnalyzerDALI Interface - InstallShield Wizard

Setup Type

Choose the setup type that best suits your needs.

Please select a setup type.

Complete
All program features will be installed. (Requires the most disk space.)

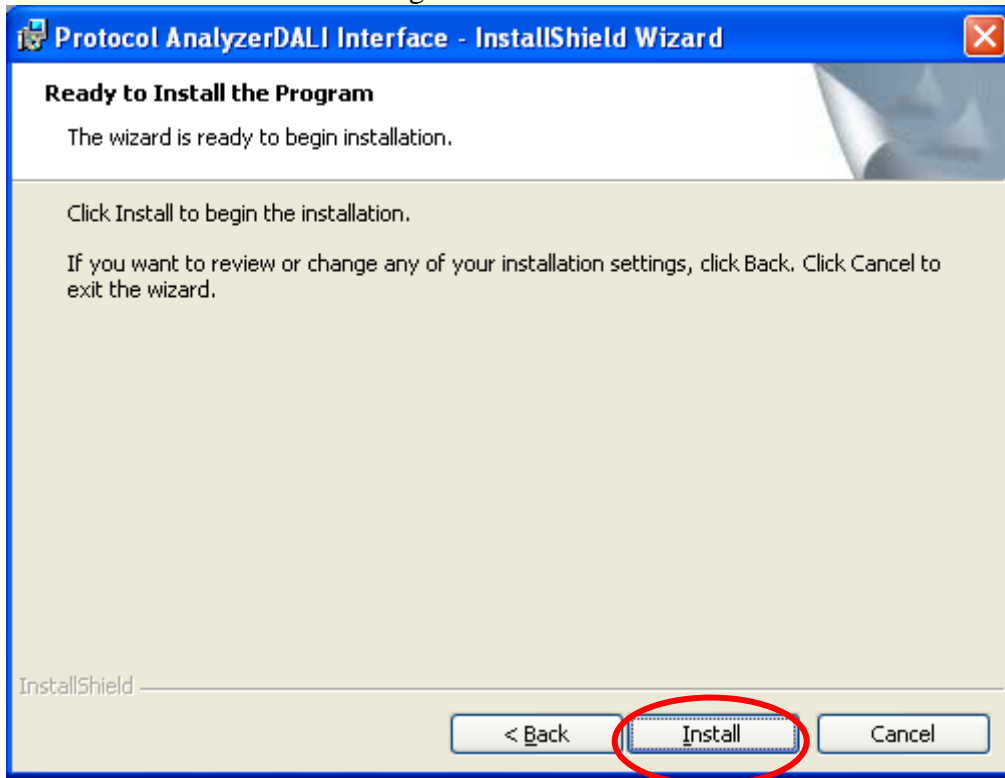
Custom
Choose which program features you want installed and where they will be installed. Recommended for advanced users.

InstallShield

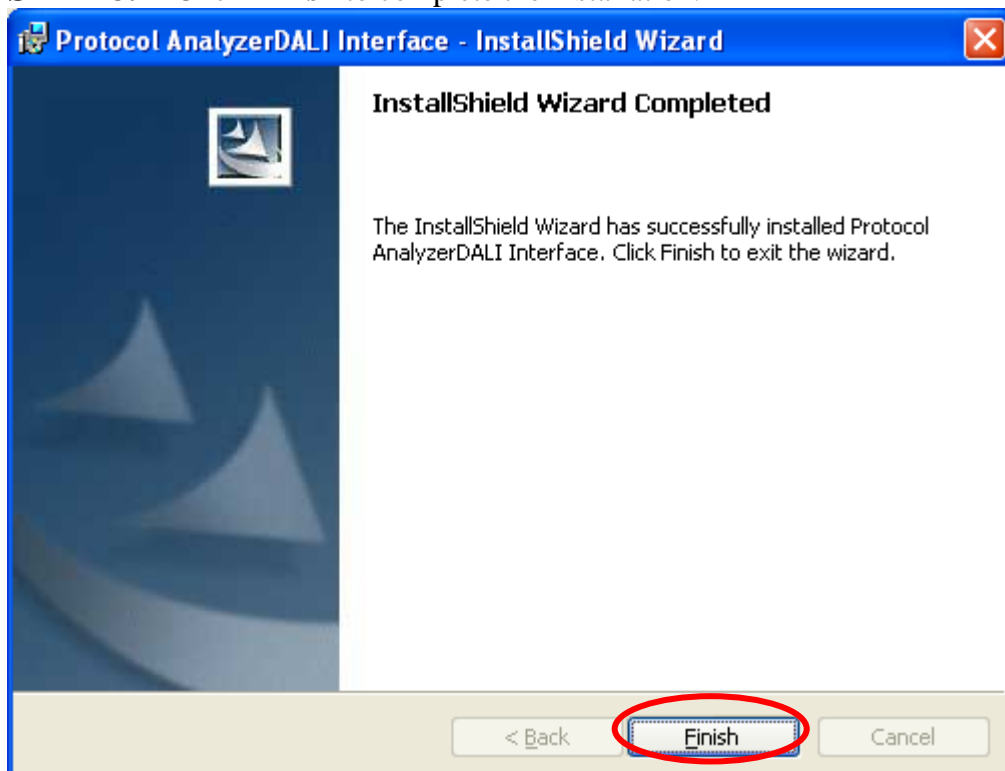
< Back Next > Cancel



STEP 7. Click **Install** to begin the installation.



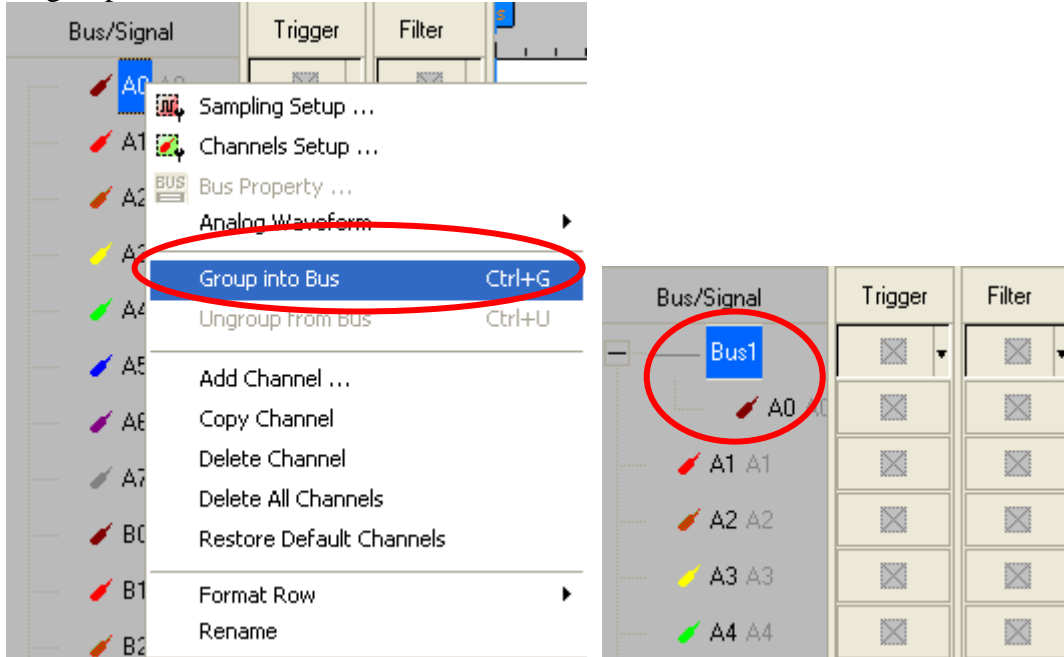
STEP 8. Click **Finish** to complete the installation.



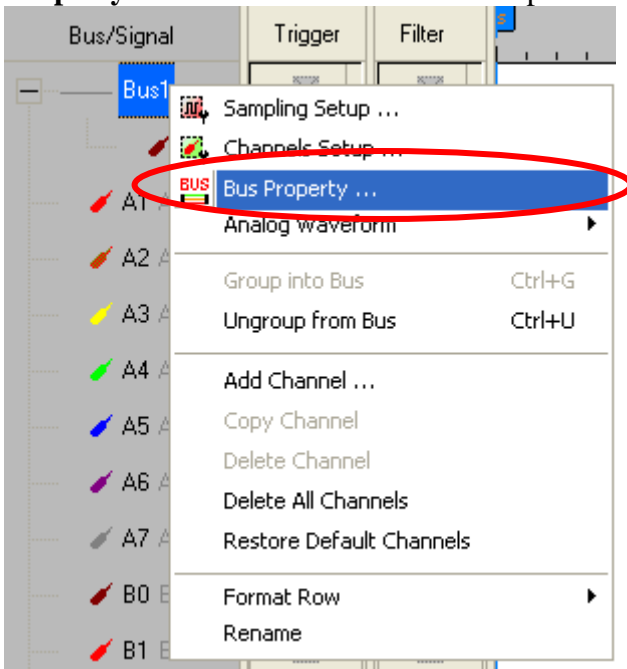


3. Software Register

STEP 1. Open the Logic Analyzer and group the unanalyzed channels into **Bus1** by pressing the **Right Key** on the mouse. DALI Interface needs only one channel to decode signals, so it is necessary to group one channel into a Bus.

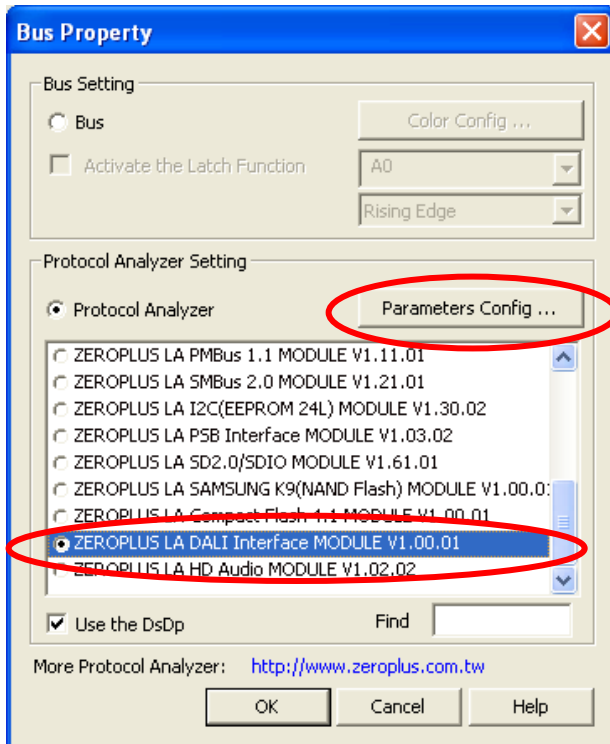


STEP 2. Select **Bus1**, then press **Right Key** on the mouse to list the menu, next press **Bus Property** or **Bus** icon on the toolbar to open **Bus Property** dialog box.

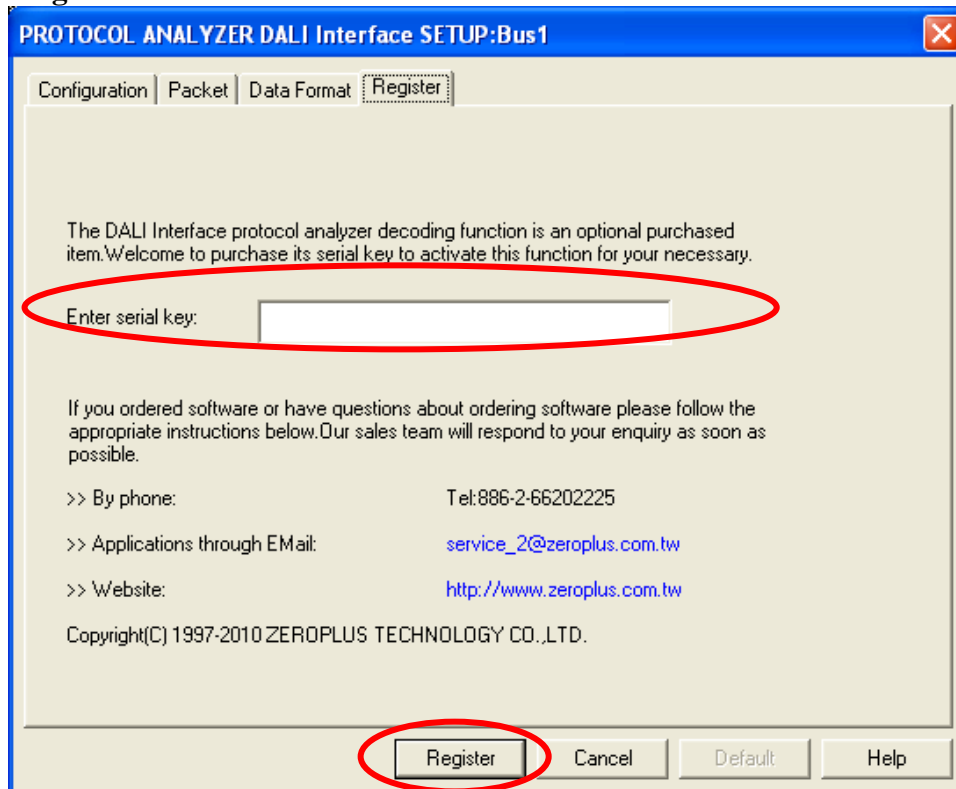




STEP 3. For Protocol Analyzer DALI Interface Parameters Configuration, select Protocol Analyzer, and then choose **ZEROPLUS LA DALI Interface MODULE V1.00.01**. Next click **Parameters Configuration** to open the **PROTOCOL ANALYZER DALI Interface SETUP** dialog box.

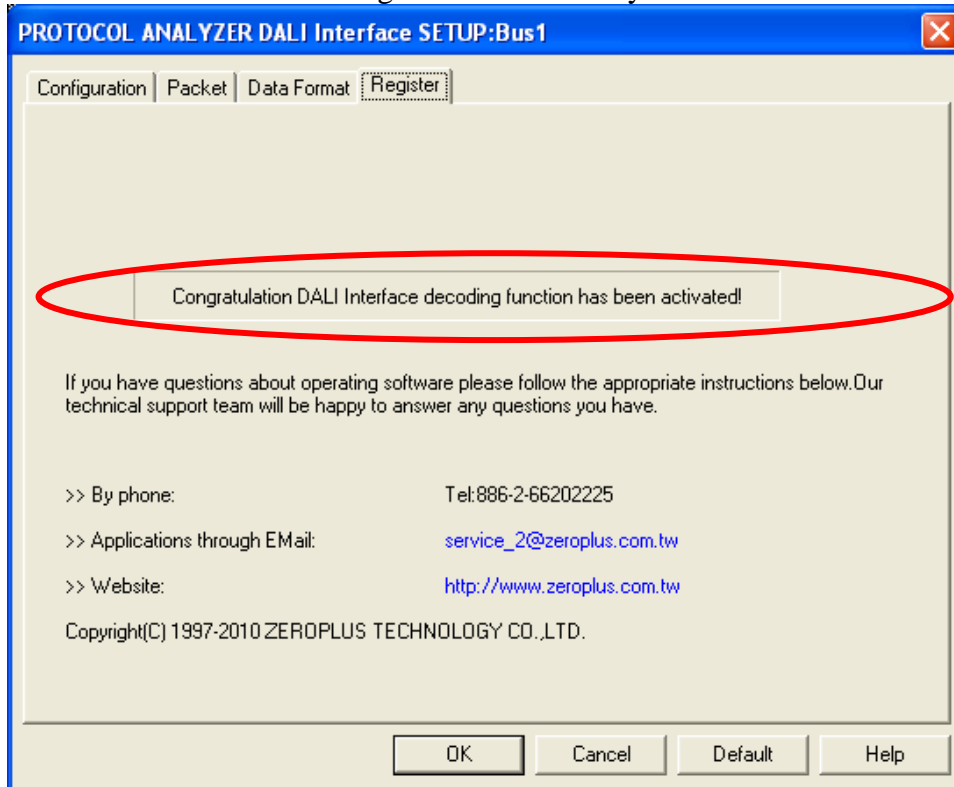


STEP 4. Press Register tab to type the serial key number of **DALI Interface**. Then, press **Register**.





STEP 5. After pressing the Register button, following dialog box will appear; it denotes that the **DALI Interface** has been registered successfully.

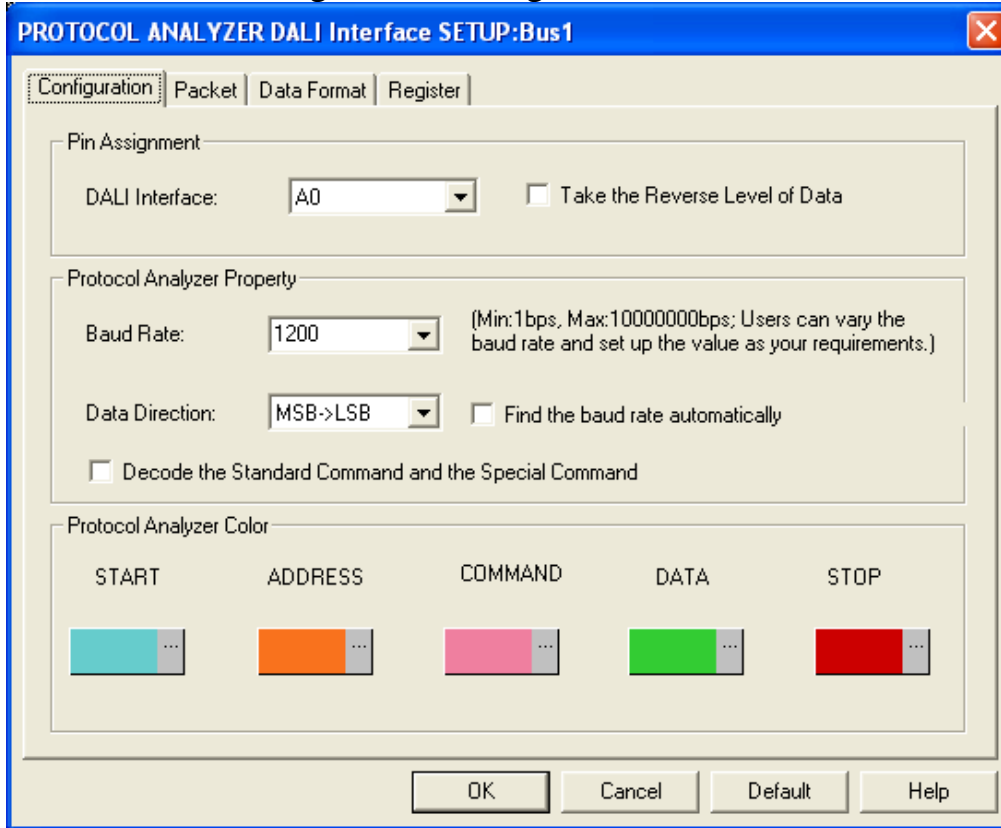




4. User Interface

In the configuration, please refer to the below images to select options of setting DALI Interface module.

DALI Interface Configuration Dialog Box



Pin Assignment:

DALI Interface: It is the Data Transmission Channel.

Take the Reverse Level of Data: Protocol Analyzer DALI Interface has two channels to transmit data, but users only need to set one channel for decoding, and the data of the other channel takes the reverse level of data of the set channel.

Protocol Analyzer Property:

Baud Rate: The default value is 1200; users can set it as their requirements. Users can select the value (There are 1200, 2400, 4800, 9600, 19200, 38400, 57600, 115200, 230400, 460800 and 921600) from the pull-down menu.

Find the baud rate automatically: When selecting the option, the software will find the baud rate automatically for users; it is available when the error is small.

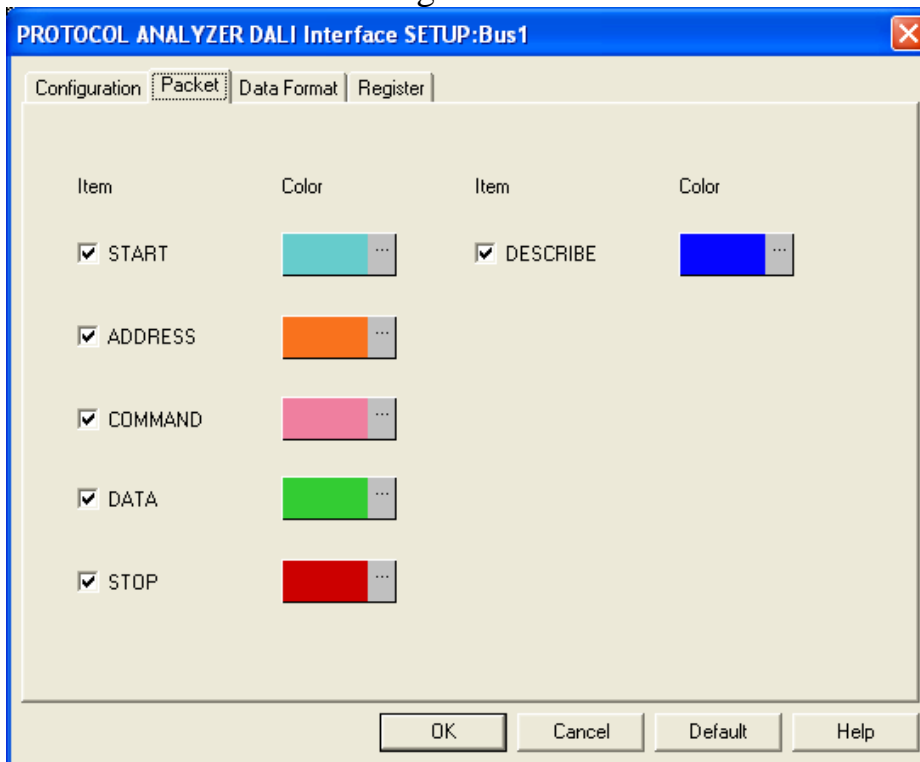
Data Direction: The default is MSB->LSB.

Decode the Standard Command and the Special Command: It can be switched between decoding the specific Command and not decoding the specific Command. That is to say, if the option is not selected, the specific Command will not be decoded.

Protocol Analyzer Color: The Protocol Analyzer Color can be varied by users.

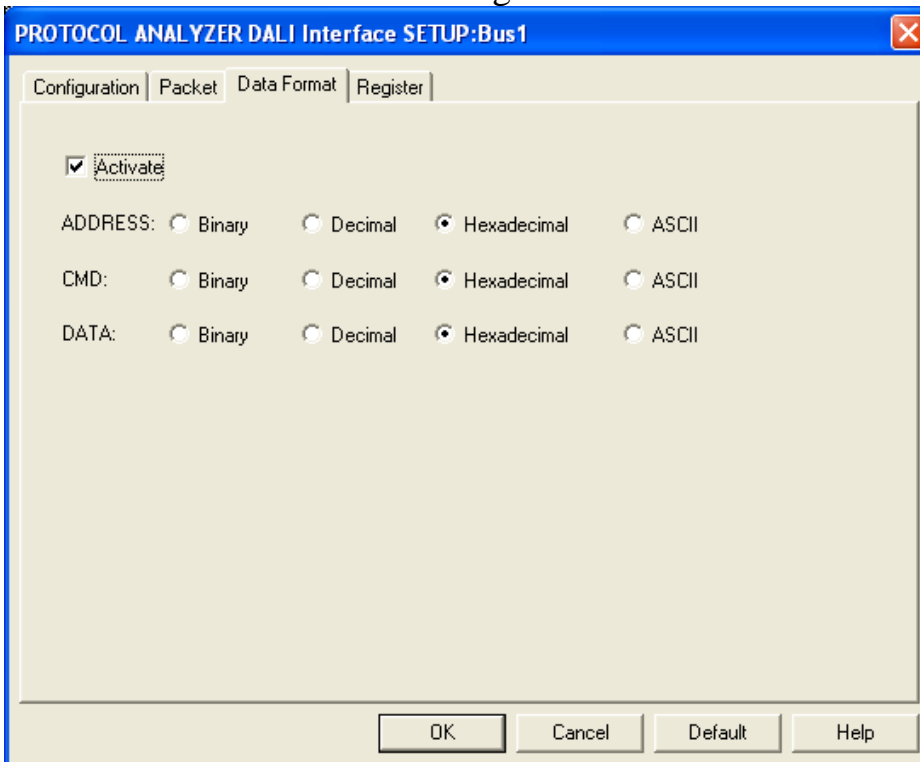


DALI Interface Packet Dialog Box



In the packet part, users can set the items and colors as users' requirements.

DALI Interface Data Format Dialog Box



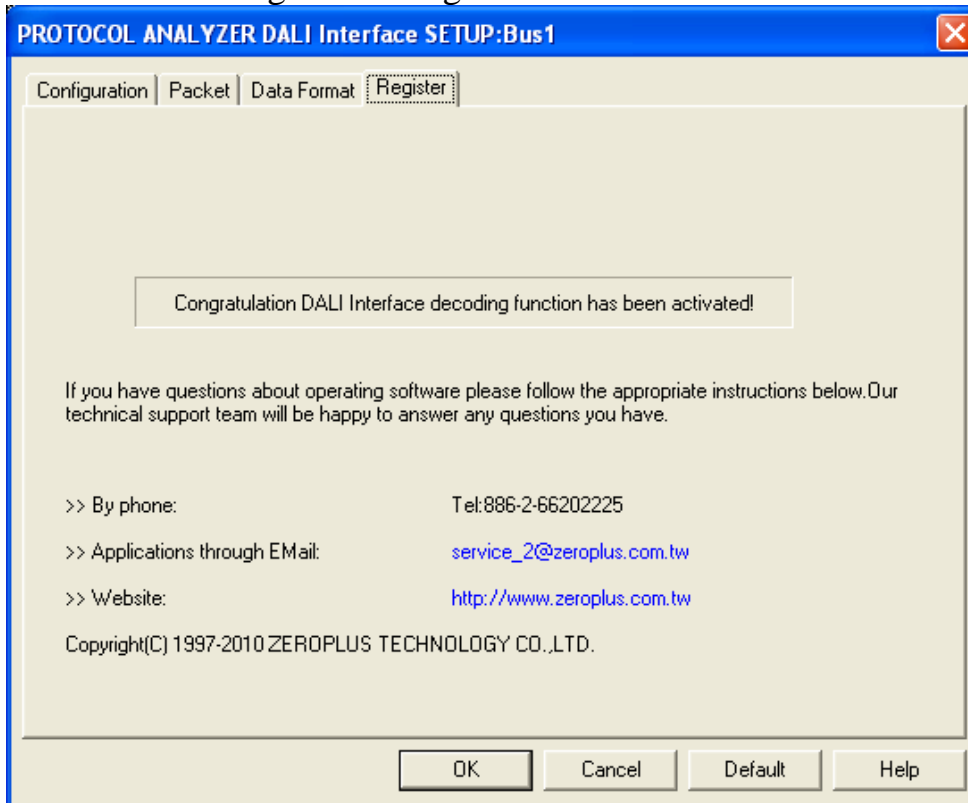
Data Format: The default of ADDRESS, CMD and DATA are all Hexadecimal.

If the function is not activated, the Data Format will be controlled by the main program and the Packet List will have the corresponding change.

When selecting the option, **Activate**, the settings of ADDRESS, CMD and DATA will be enabled. The set Data Format will be displayed in the Waveform Area and Packet List.



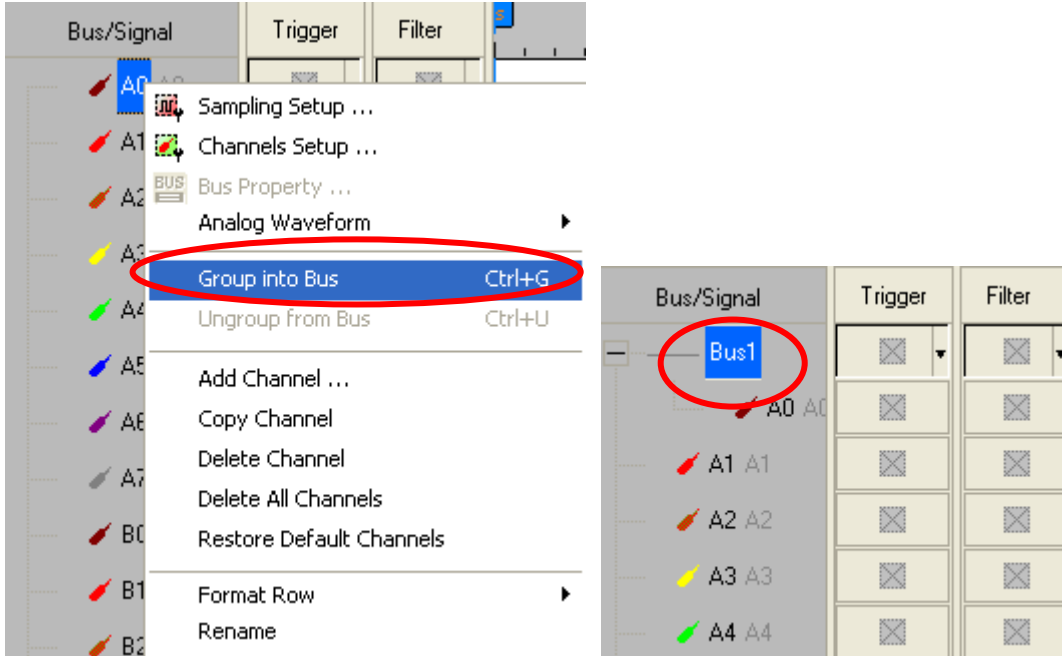
DALI Interface Register Dialog Box



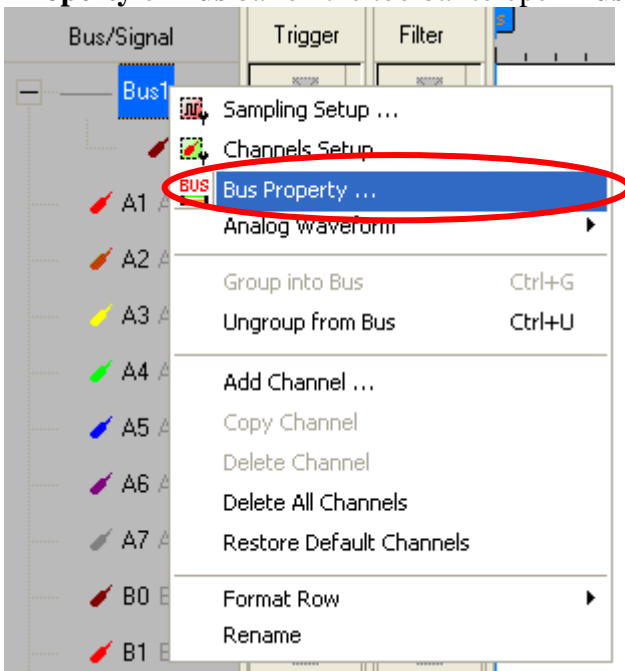
There is written ZeroPlus company information. If you have any questions about software operations, you can contact ZeroPlus by Telephone or Email.

5. Operating Instructions

STEP 1. Group the unanalyzed channel into **Bus1** by pressing the **Right Key** on the mouse. DALI Interface needs only one channel to decode signals, so it is necessary to group one channel into a Bus.

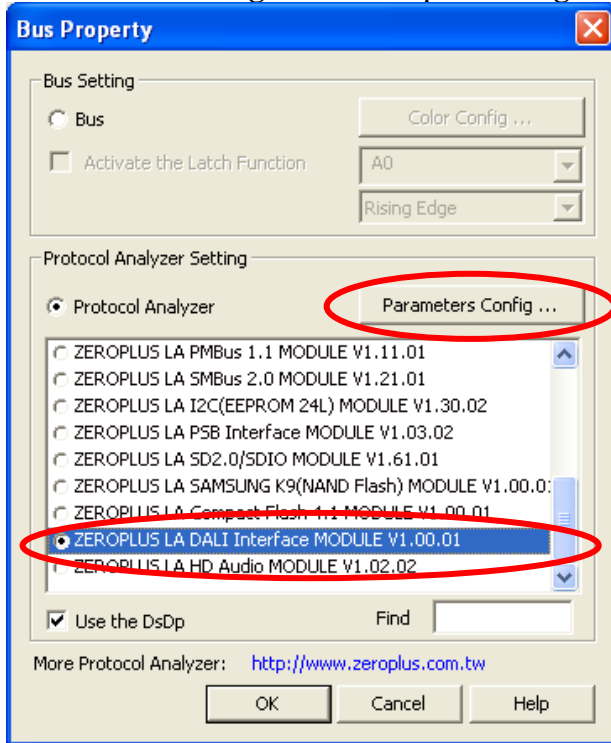


STEP 2. Select **Bus1**, and press **Right Key** on the mouse to list the menu, next press **Bus Property** or **Bus bar** on the toolbar to open **Bus Property** dialog box.

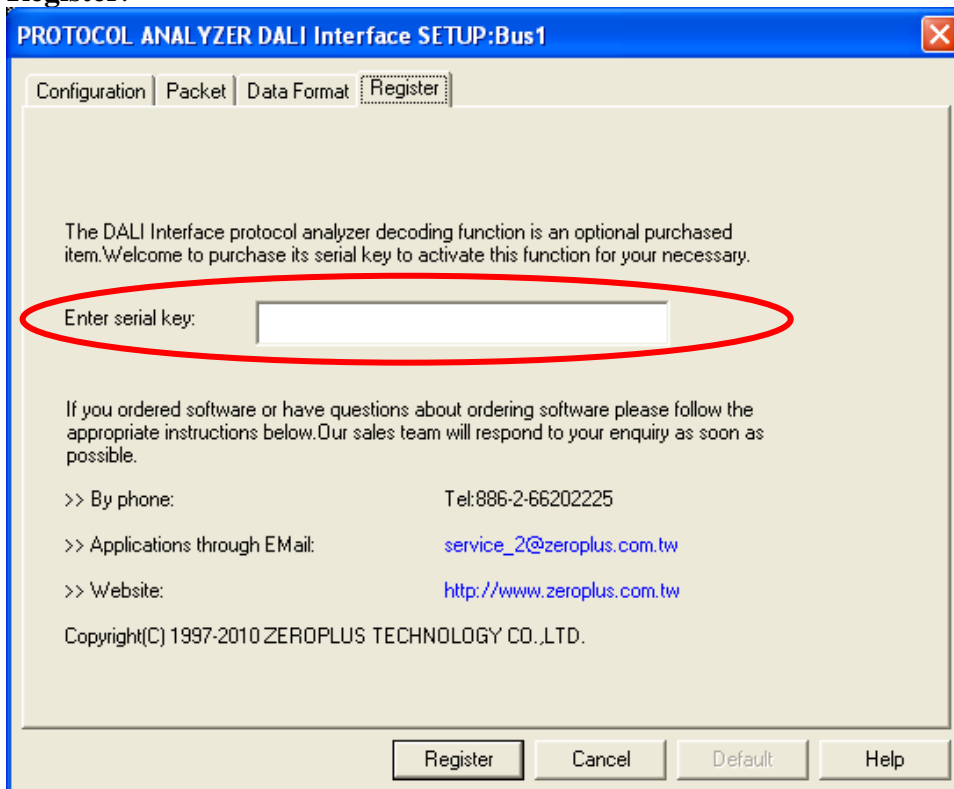




STEP 3. For Protocol Analyzer DALI Interface Parameters Configuration, select Protocol Analyzer, and then choose **ZEROPLUS LA DALI Interface MODULE V1.00.01**. Next click **Parameters Configuration** to open **Configuration** dialog box.

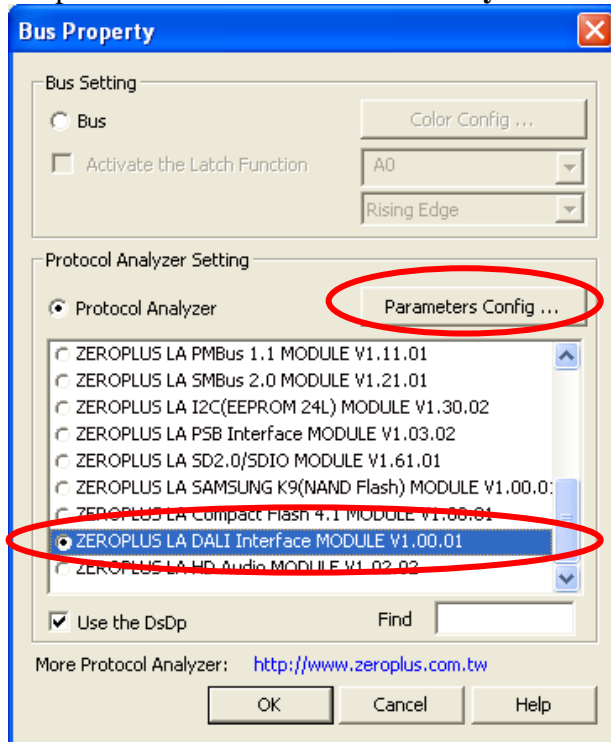


STEP 4. Press Register tab to type the serial key number of DALI Interface. Then, press **Register**.

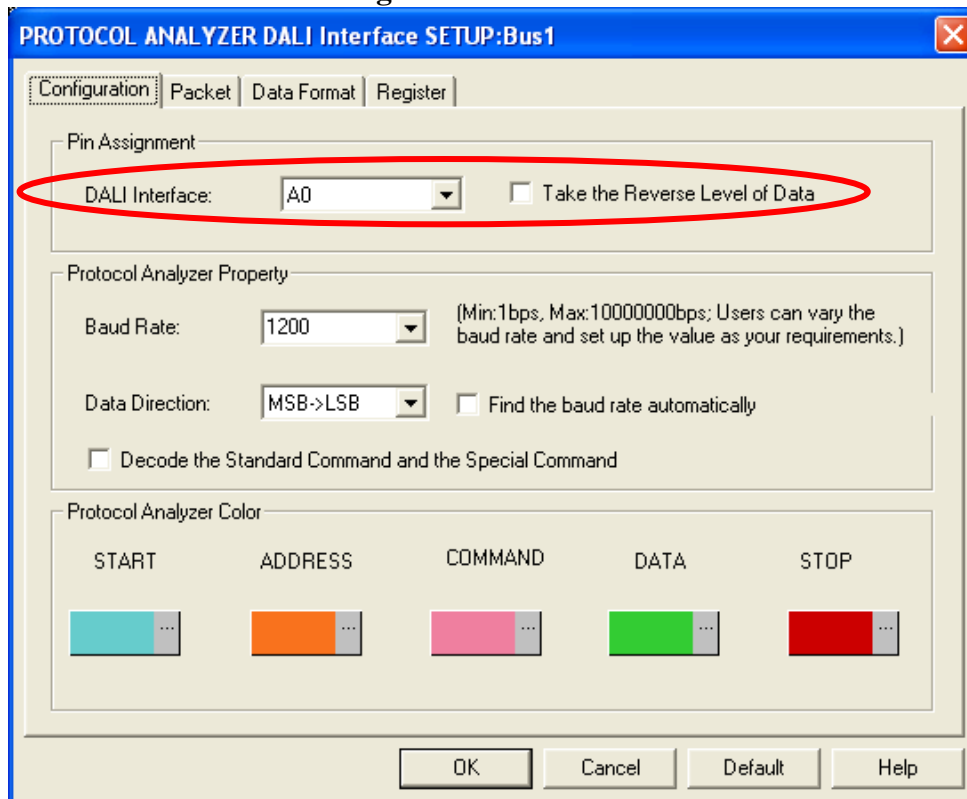




STEP 5. Click **Parameters Configuration** again, and open the configuration dialog box to set the parameters for the **Protocol Analyzer DALI Interface**.

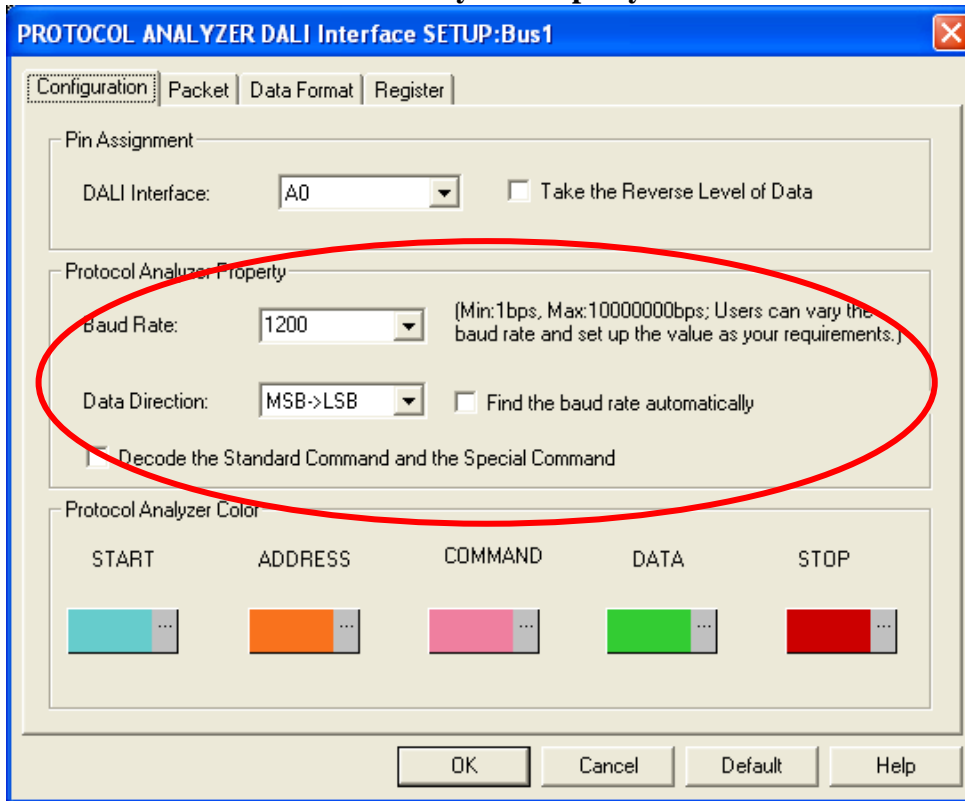


STEP 6. Set the **Pin Assignment**.

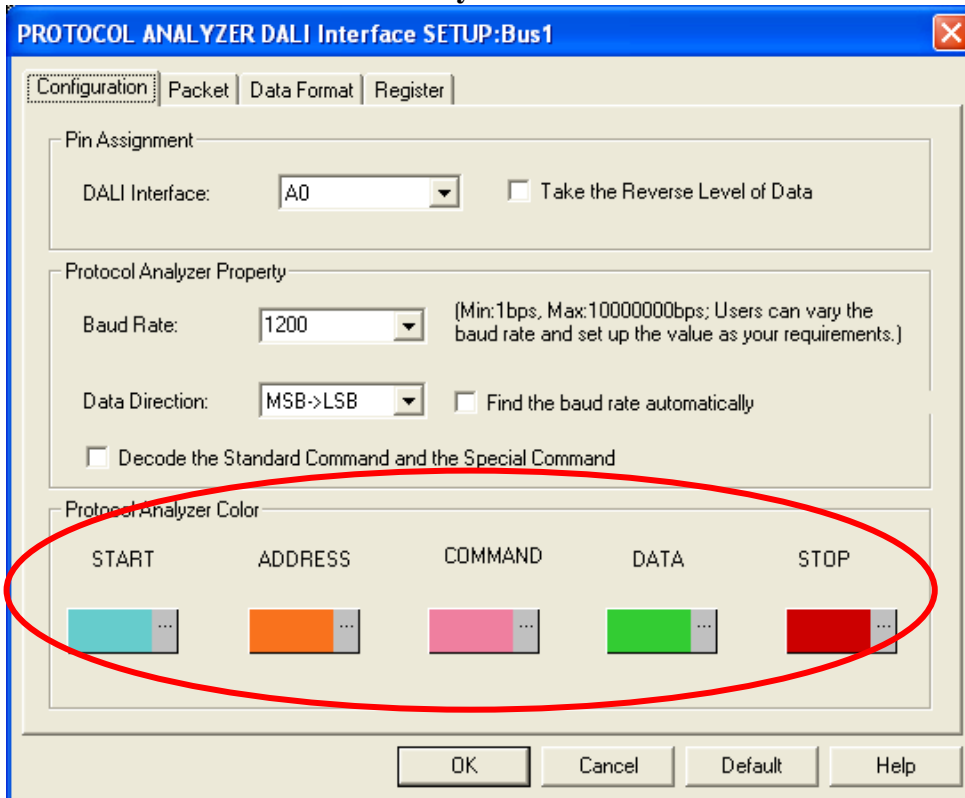




STEP 7. Set the Protocol Analyzer Property.



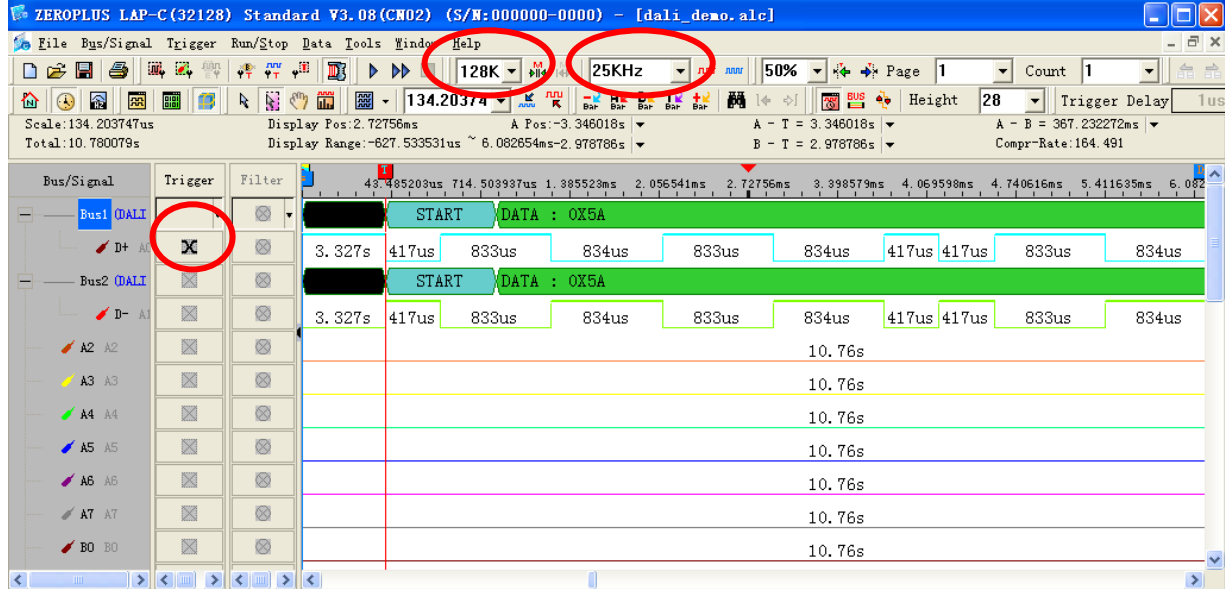
STEP 8. Set the Protocol Analyzer Color.





STEP 9. Following pictures show the completion of the protocol analyzer decoding and the packet list. The trigger condition is set as Either Edge; the memory depth is 128K; the sampling frequency is 25KHz (the sampling frequency should be more than 4 times higher than the signal to be tested).

Protocol Analyzer Decoding



Packet List

